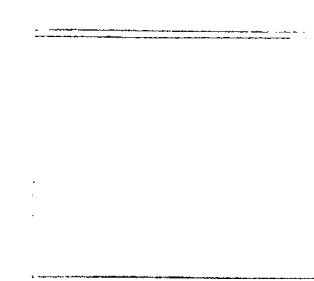
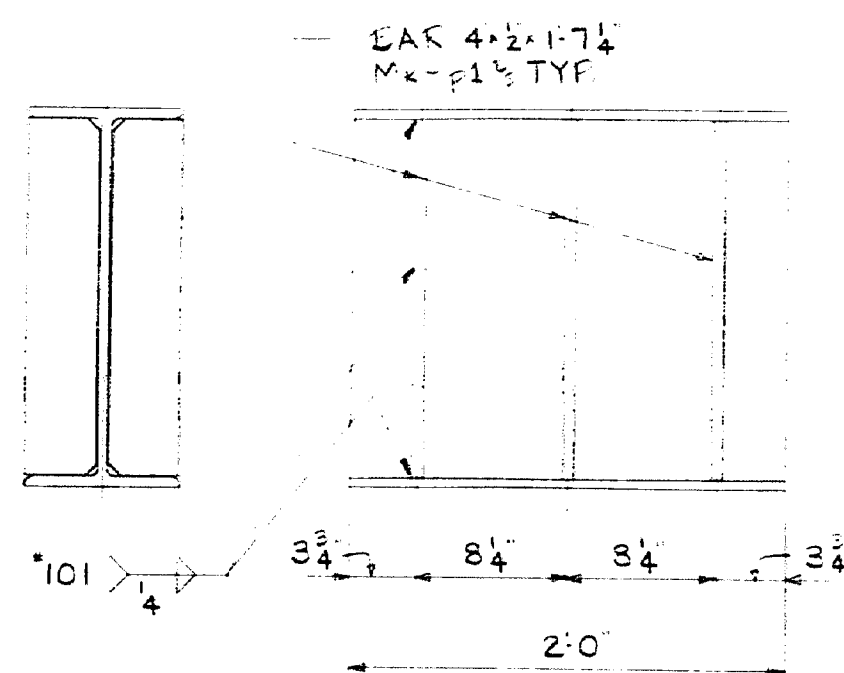


ITEM #
504.614 + 504.615

NOTE THIS ITEM WAS
PAINTED WITH STATE
OF ME. SPEC. 4 M. L. S. WE-

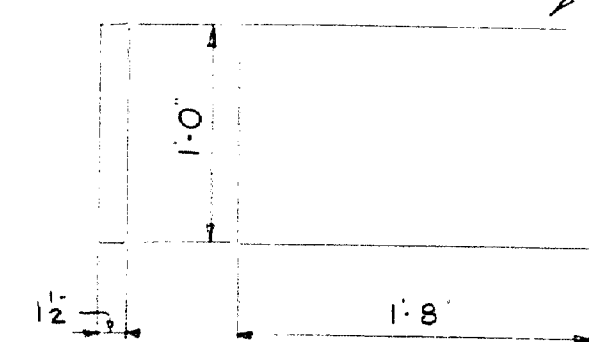


2-SK1A
W14x74
ALREADY SHIPPED
11-16-82

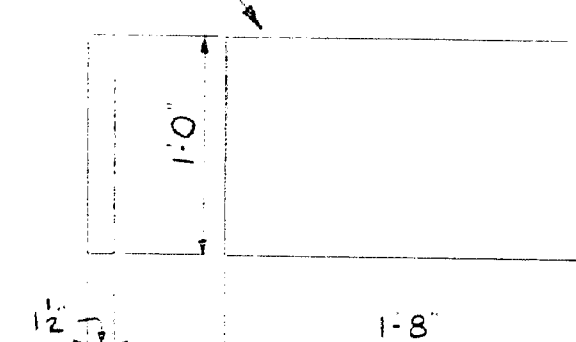


ONE - 1D
W21x82

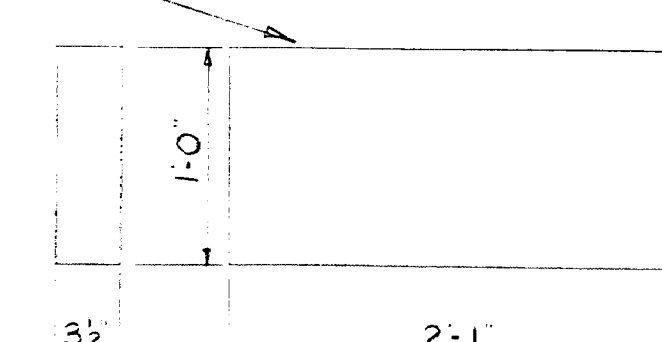
COMM. BLAST SP-6



ONE - 1E
R12x12x1/8
BEARING R

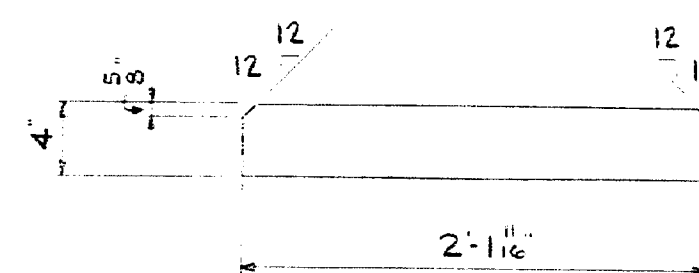


ONE - 1F
R12x12x1/8
SOLE R

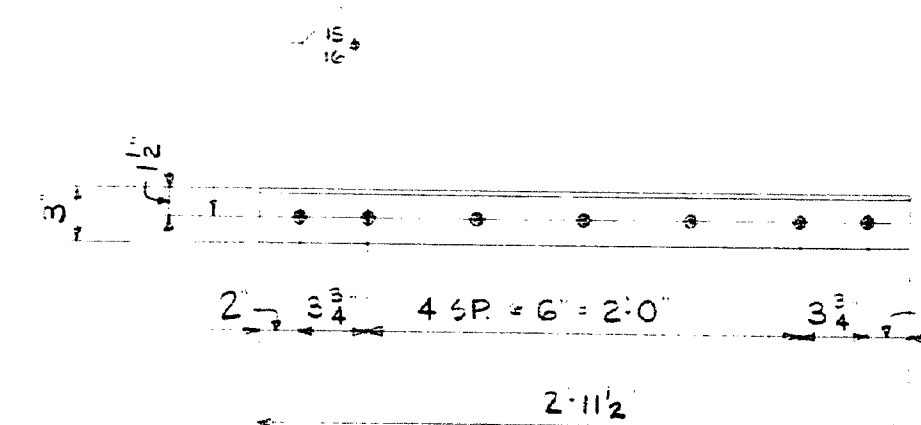


ONE - 1C
R 3/4x12x2'-1\"/>

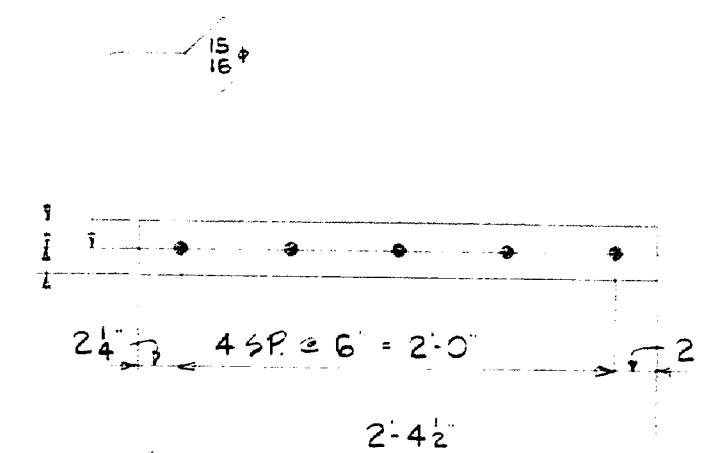
LACKING MATERIAL
ITEM # 504.612 + 504.613



8-1G
LAK 4'-2'-2'-11 1/2\"/>



32-1J
L 3/2x3/2x2'-11 1/2\"/>



32-1H
LAK 3'-2'-2'-4 1/2\"/>

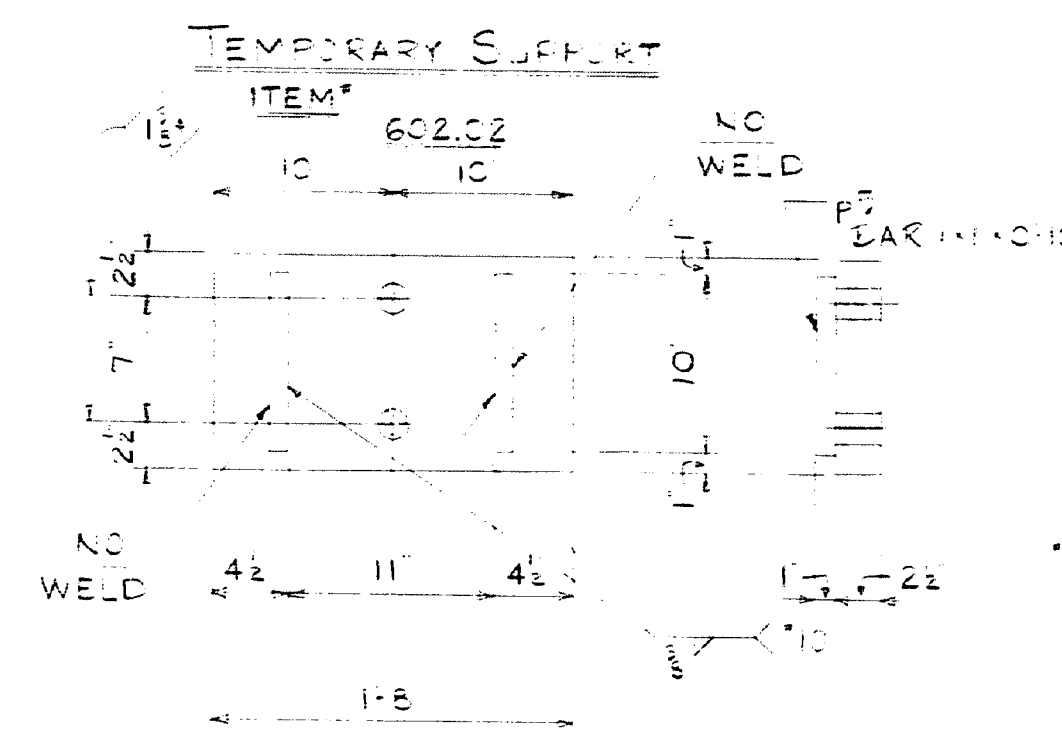
ITEM	QTY	DESCRIPTION	DATE	STATUS
1D	ONE	W21x82	2 0	
1E	ONE	R12x12	1 5	
1F	ONE	R12x12	1 3	
1C	ONE	R 3/4x12	2 1	
ALL ITEMS BELOW ALREADY SHIPPED				
SK1A	2	W14x74	1 4 1/2	SHIPPED 11-16-82
1G	8	BAR 4'-2'	2 11 1/2	SHIPPED 10-20-82
1H	32	BAR 3'-2'	2 4 1/2	SHIPPED 10-12-82
1J	32	L 3/2x3/2x3'	2 11 1/2	SHIPPED 10-12-82
1U	250	3/8 A-325	0 3/4	SHIPPED 10-12-82
1V	250	7/8 HARD WSH	~ ~	A-325 SHIPPED 10-12-82

A-36 STEEL
PROJECT No. BH-C42-1(31)

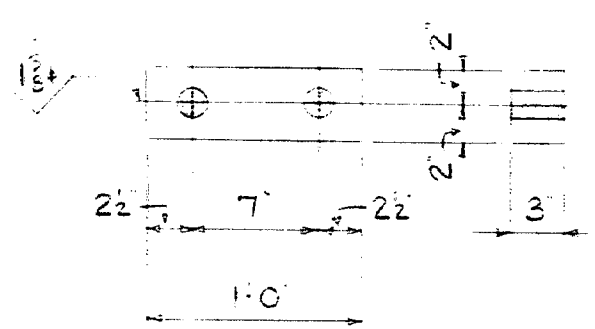
CUSTOMER ORDER NO. 2691M
REFERENCE DRAWING SBG-B-6-7
HONER 1/8\"/>

JACKING MATERIAL	
MEGQUIER & JONES CORP.	
1750 BROADWAY	
SOUTH BURLAND, MAINE 05201	
WALDO-HANCOCK BRIDGE	
VERONA, MAINE	
DRAWN BY: CIANBERO CORP.	
CHECKED BY: STEINMAN, KENTON, GREENHUNT, EISENBAUM	
DATE: 1-30	REV: 1

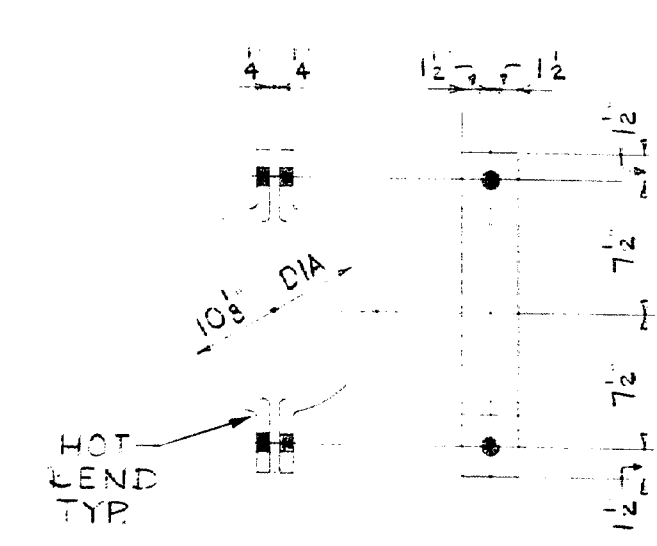
181-102



2-1T
P 2 1/2 x 12 x 1'-8

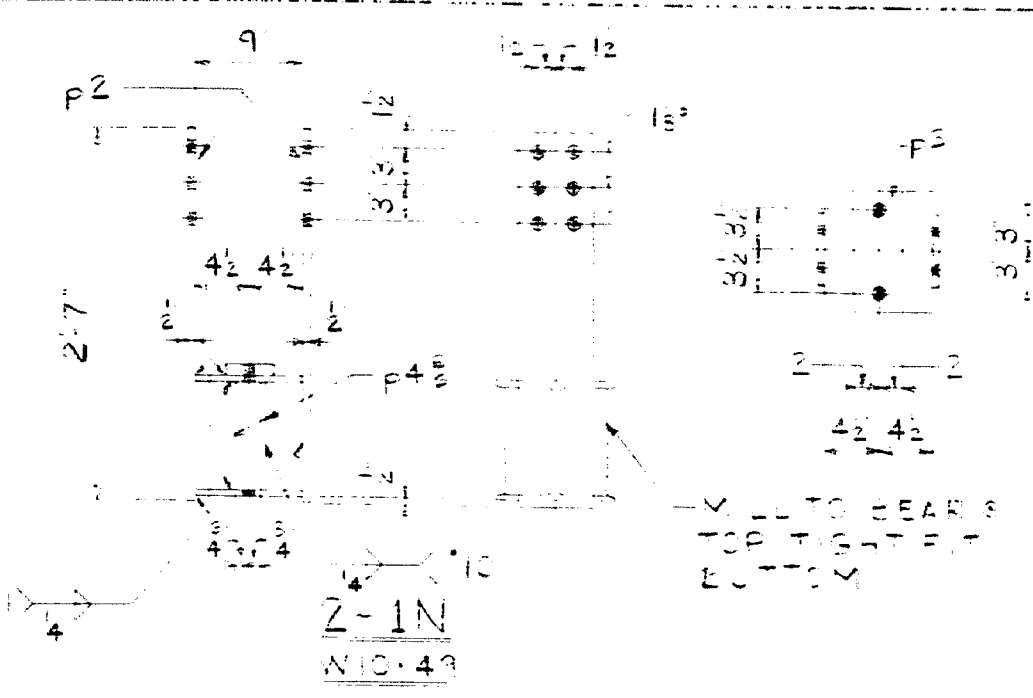


2-1K
P 3 x 4 x 1'-0

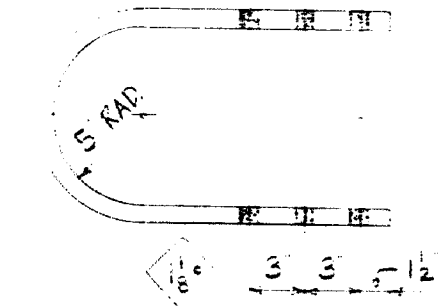


8-1M
4 LOCATION CLAMPS
BAR 1/2 x 1'-8 1/2 IN ENT

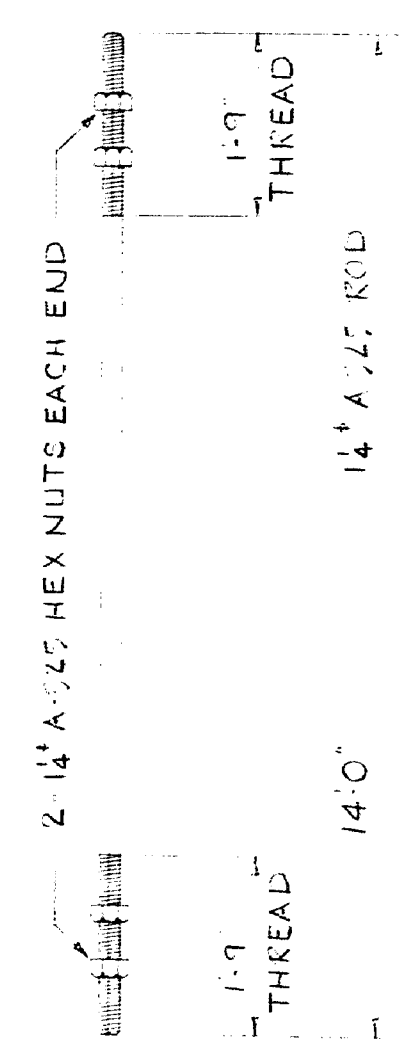
CURBITE ADDRESS:
CIAMBRO CORP
910 VERONA BRIDGE
U.S. ROUTE 1
PROSPECT, MAINE



2-1N
N 10 x 4 1/2



2-1P
2 1 x 12 x 3'-6 1/2 IN ENT



NOTE:
CLAMP CLEAN, SPS (COMM. ELAST.)
DON'T PAINT

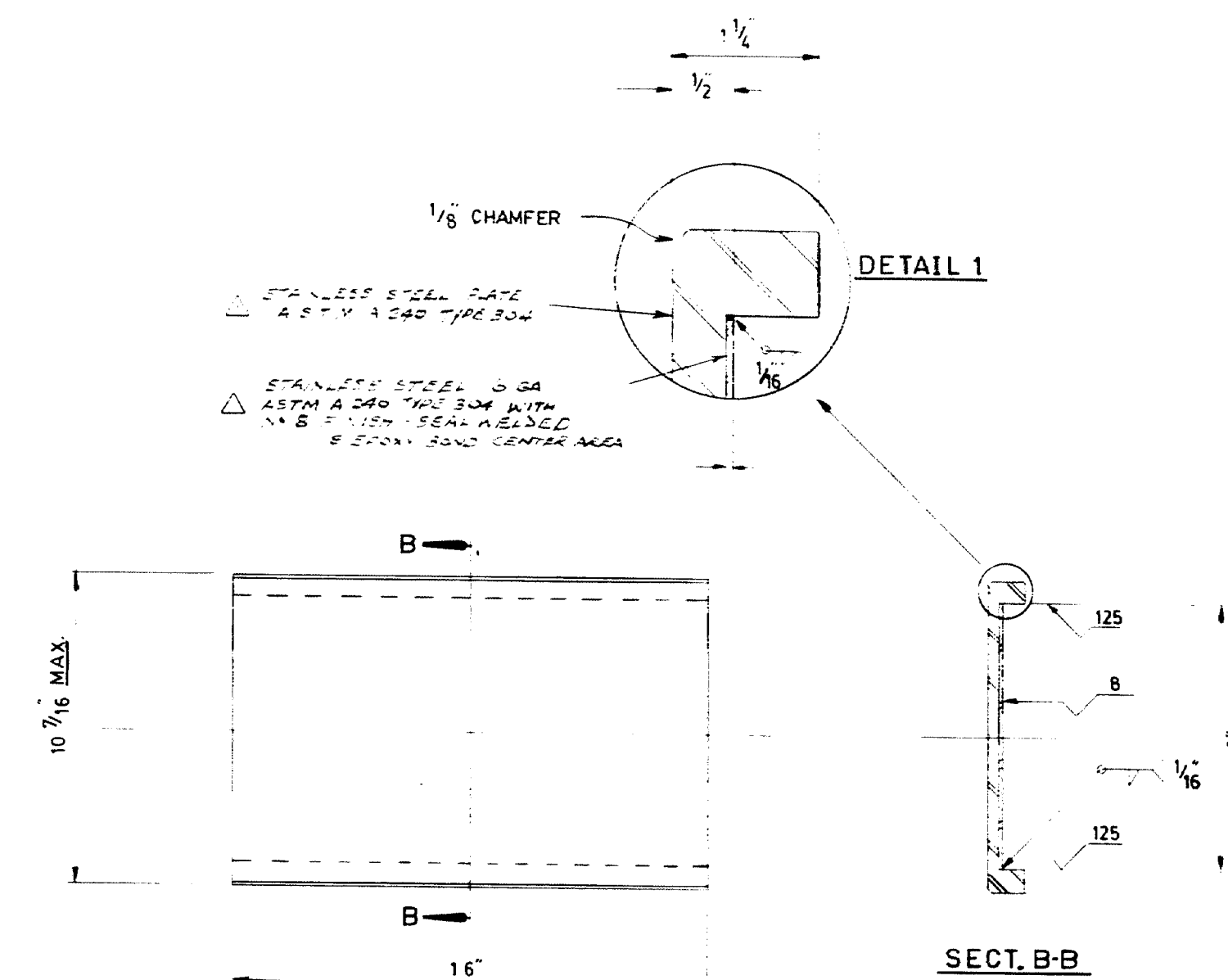
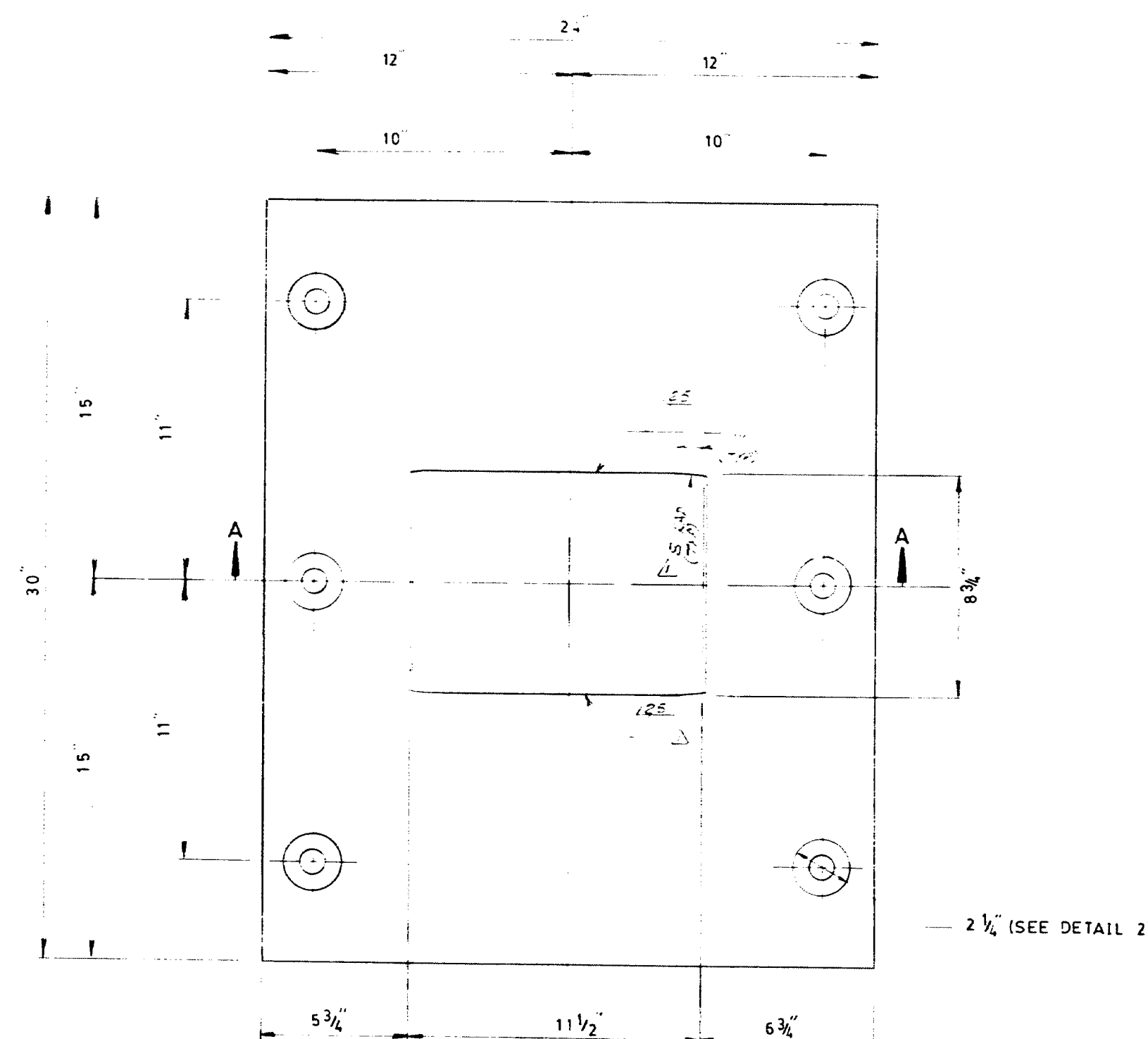
1X	2	P 3 x 4	0	
1Y	5	BAR 3 x 3	5 1/2	END
1U	2	W 10 x 49	0	
4	2	BAR 3 x 3	2	7
2	2	P 3 x 4	0	0
5	4	BAR 4 x 2	0	5 1/2
1P	2	P 1 x 2	3	5 1/2
				END
1R	4	4" ROD	14	0
6	2	HEAVY HEX NUT		
				A-325
1T	2	P 3 x 12	1	8
4	2	BAR 1 x 1	0	10

STEEL A-36 UNLESS NOTED
PROJECT No. EH-042-1(31)

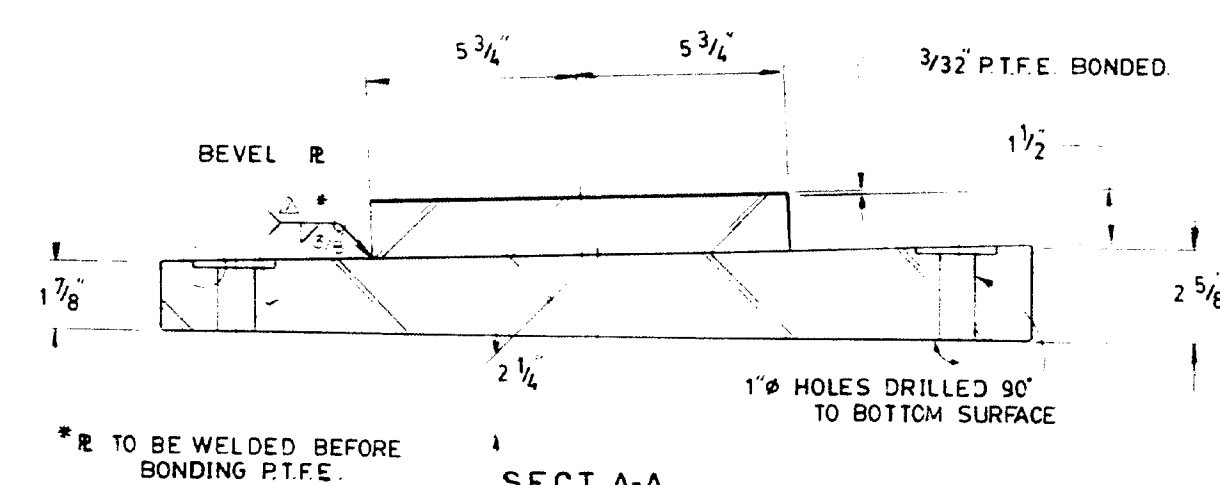
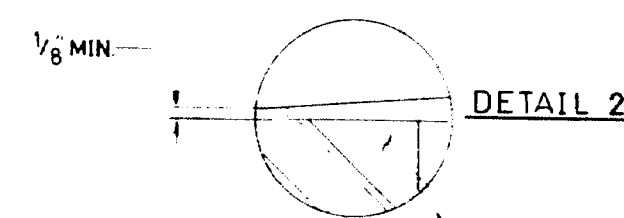
QUANTITY	2691 M
REFERENCE	MDOT 6.9
NOTES	12" L.N.O.
TESTS	NONE REQUIRED
TEMPORARY SUPPORT MATERIAL	
MEGQUIER & JONES CORP.	
VIALDO HANCOCK BRIDGE	
VERONA MAINE	
CIAMBRO CORP.	
MDOT	
DATE	1A

181-103

181-106



PART MKa
4 REQD.



PART MKb
4 REQD.

- NOTE:
1. ALL MATING SURFACES MUST BE WITHIN .010" FLAT.
 2. PROTECT P.T.F.E. FROM DIRT AND EXCESSIVE EXPOSURE TO DAYLIGHT.
 3. PROTECT POLISHED STAINLESS STEEL SURFACE FROM WELD SPATTER.
 4. WHEN WELDING PART MKa TO EXISTING STEEL ENSURE THAT THE TEMPERATURE OF THIS PART DOES NOT EXCEED 250°F. USE TEMP INDICATING WAX PENCIL OR OTHER SUITABLE MEANS.

SPENCER		SPENCER DYNAMICS CORPORATION Providence, R.I.	
TITLE			
<u>STATE OF MAINE</u>		34-042-(1)	
DEPT. OF TRANSPORTATION WALDO HANCOCK BRIDGE - BEARING DETAILS -			
CUSTOMER			
CIANBRO GENERAL CONT.			
MATERIAL			
Steel - ASTM A-588 Unpainted Stainless Steel - ASTM A-240 Type 304 NO. 8 FINISH. F.T.F.E. - ASTM D-1457 Virgin Unfilled			
REV	REV OR ADD AS MARKED	DATE	REV
J-1949	R.E.B.	2-8-84	3847
SCALE	3"=1'		

181-108